

HAZEMAG



HAZEMAG
Multi-purpose Shaft Excavator | HME 200





HME 200

The small versatile excavator

Multi-purpose excavator for mining and shaft sinking

- ideally suited for use in confined spaces
- multi-functional applications thanks to different attachment tools
- quick-coupling system for tool change
- optimized transport and slinging dimensions
- easy assembly and maintenance
- robust design of all components

Attachment tools for HME 200

Bucket

- Type TL 100 capacity 100 l
- Type TL 160 capacity 160 l
- Type TL 300 capacity 300 l (backhoe/face bucket)

Drilling device with hydraulic rock drills

- with hydraulic drifter HDP 15
- with hydraulic rotary drill HDR

Hydraulic breaker

- for scaling, rock breaking and dinting

working platform

- load capacity 300 kg

Manipulator

- for installation of steel arches

Forklift

- for transport and handling of materials

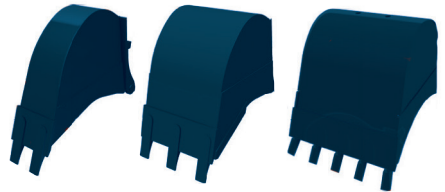
Technical data HME 200

Electric motor rating	63 kW
Pump flow	230 l/min
Hydraulic tank volume	160 l
Length	4.540 mm
Width	1.484 mm
Height (without protective roof)	1.673 mm
Height (with protective roof)	2.190 mm
Total weight of excavator approx.	7.500 kg
Specific ground pressure	10.1 N/cm ²
Gradeability (longitudinal)	20 degrees
Gradeability (transverse)	8 degrees
Tramming speed	0.5 m/s
Ground clearance	225 mm
Backhoe bucket	90 l / 170 l / 300 l
Breakaway torque	44 kN
Protective roof	optional
Dozer plate	optional
Attachment tools	<ul style="list-style-type: none"> ■ hydraulic drilling device ■ hydraulic breaker ■ working platform ■ steel arch manipulator ■ forklift

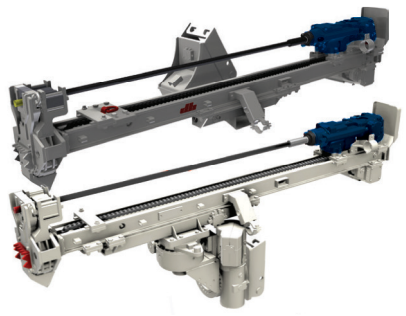




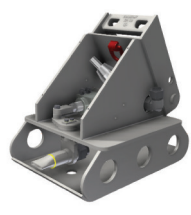
HME 200 Attachment tools for every task



Backhoe buckets with 90I, 170I, 300I



Drilling devices



Blow-over manipulator



Hydraulic breaker

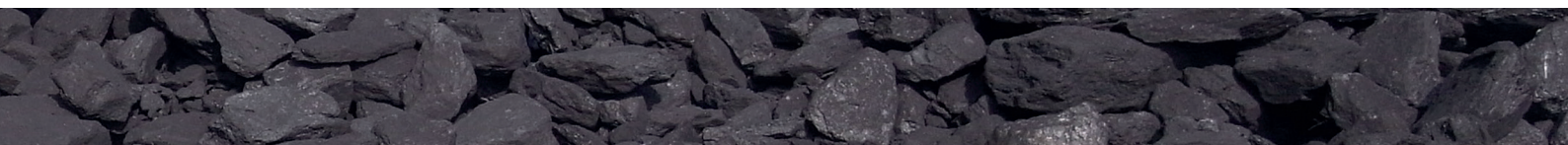


Manipulator



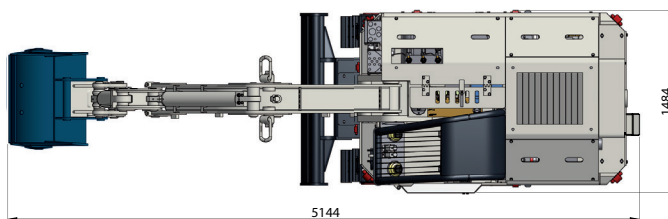
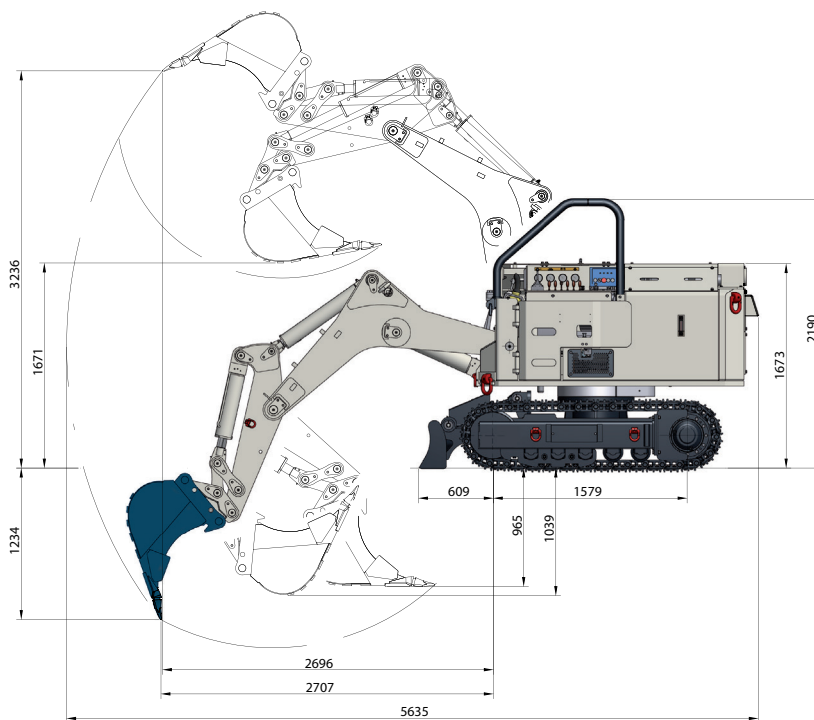
Service platform

HME 200 attachment tools



HME 200

Compact design for Shaft sinking



Multi-purpose Shaft Excavator HME 200 with backhoe bucket